

ROM Upgrade Utility (RUU)

Before Running the ROM Upgrade Utility

Before you run the ROM Upgrade Utility (RUU), make sure you check and do the following first:

1. USB sync cable is connected to the computer.
2. The standby and hibernation modes are disabled on the computer.
3. All running applications on the computer have been closed.
4. USB sync cable is connected to the Mobile Device to establish an ActiveSync connection with the computer.
5. Do not interact with your Mobile Device unless instructed to do so.

General Procedure on Installing the ROM Update

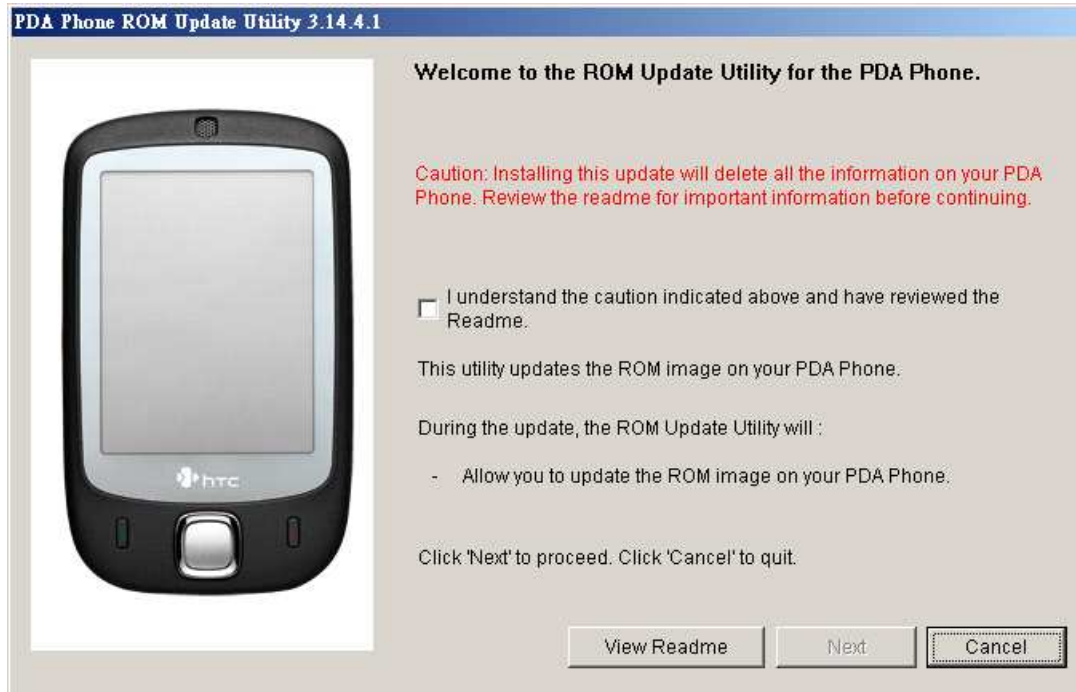
1. Back up your personal data from the Mobile Device to your computer using ActiveSync if you want to ensure you don't lose any of your data.
2. On your computer, run the ROM Update Utility (RUU) to install the ROM update to your Mobile Device. (The next section provides a detailed procedure on how to install the ROM Update).
3. Restore your personal data back to your Mobile Device using ActiveSync. (Optional)

How to Install the ROM Update

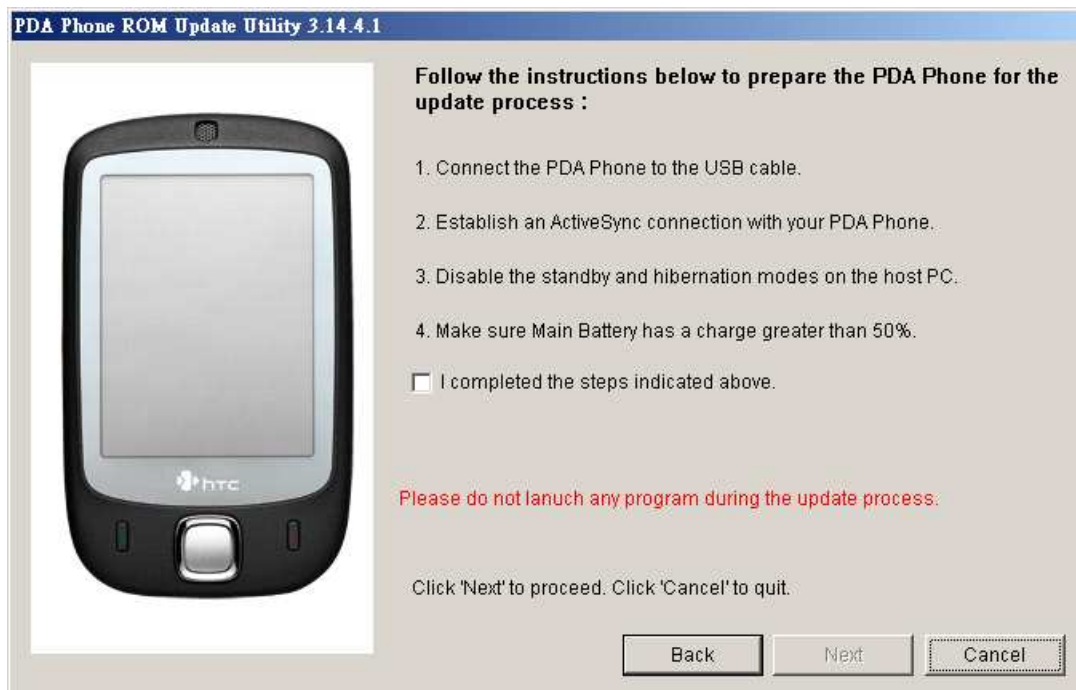
It is very important that the help desk personnel understands very well the installation instructions. Actual hands-on practice with the installation process is recommended for the personnel to better understand any installation problems users may have.

Note: Before running the RUU, back up any personal data from the Mobile Device to the computer first using ActiveSync.

1. On the **Welcome Screen**, click **Next** to begin the ROM update installation.

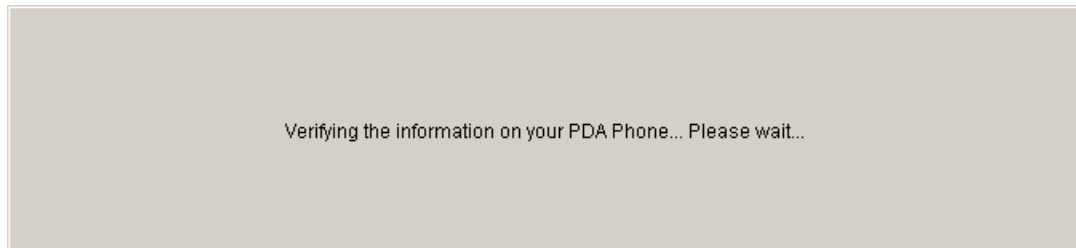


2. On the next screen, follow the listed instructions in the dialog box first. When you are done, click **Next** to proceed.

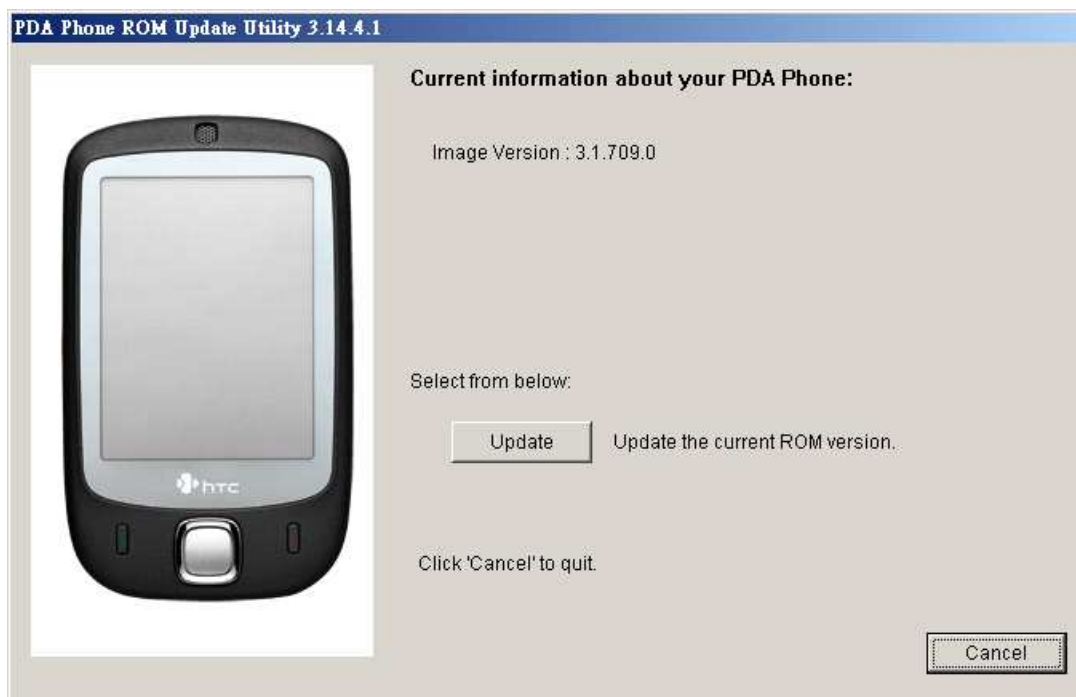


Note: You should read and follow all the instructions listed before clicking **Next**.

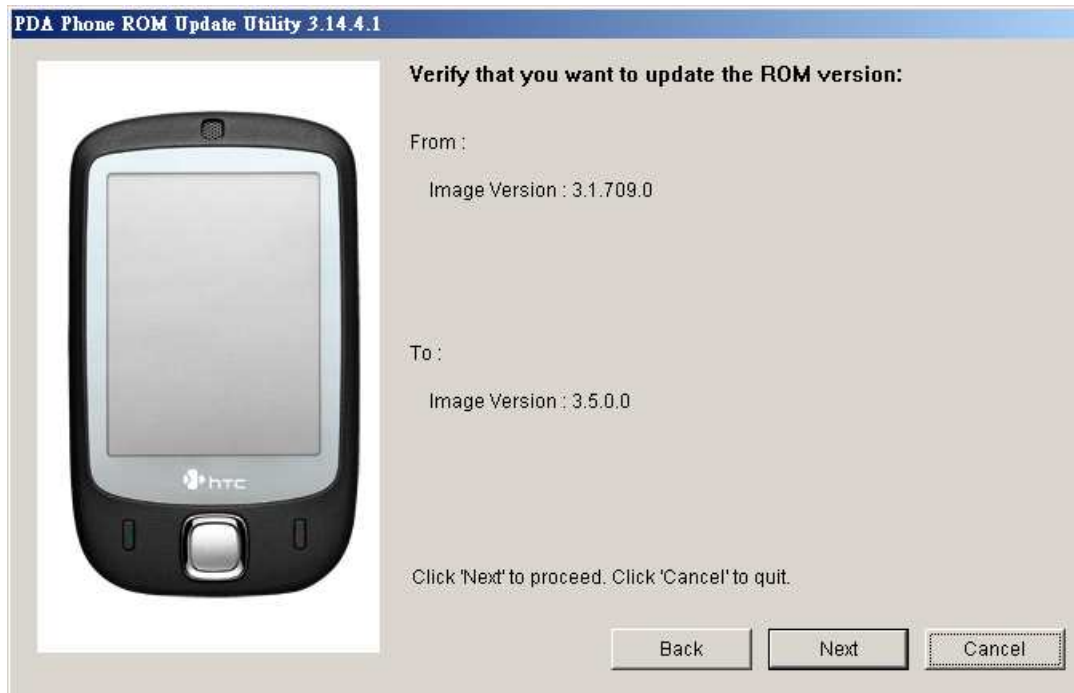
3. The following message will then be displayed, indicating that the utility is verifying and acquiring information about the device as preparation for the update process. Wait for this verification process to finish.



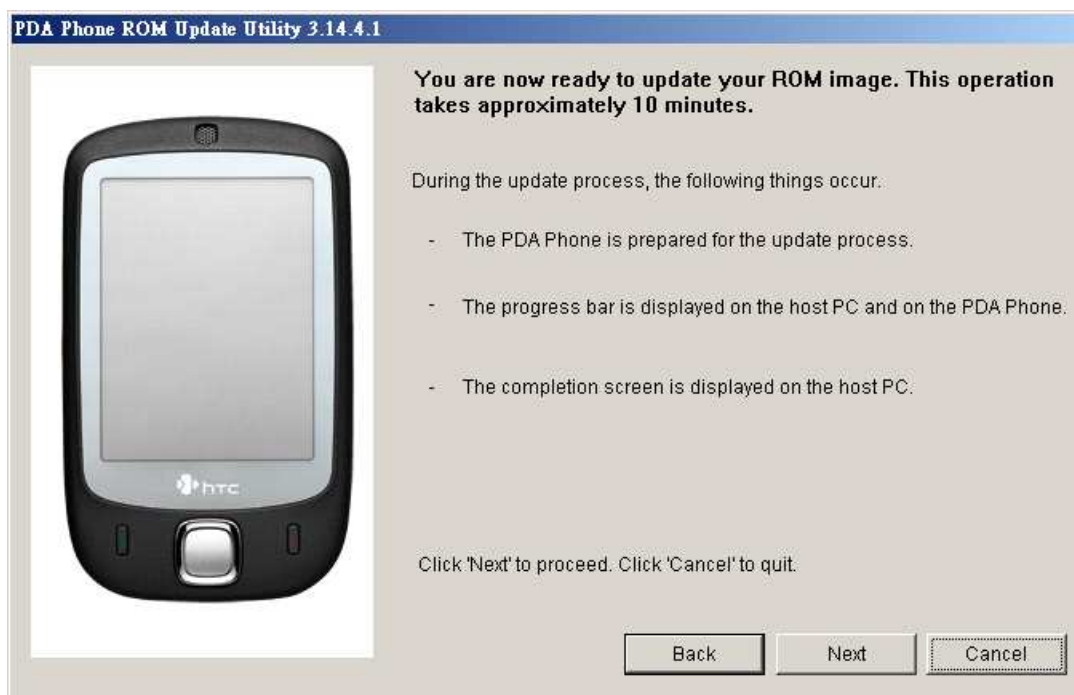
4. Current information about the device, such as the model ID, image version and language will then be displayed. Click **Update** to proceed.



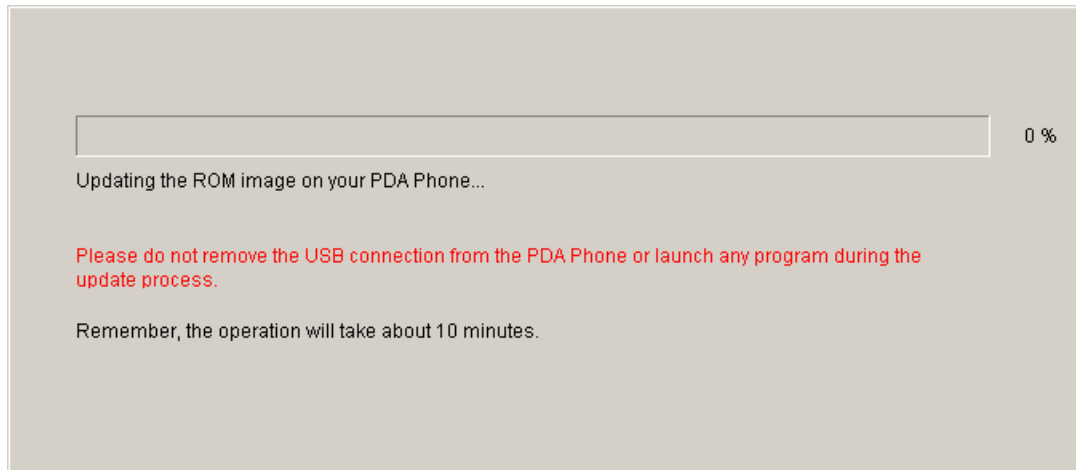
5. Below the device information, information about the new ROM update will then be displayed. If you are certain that you want to install the Mobile Device with the new ROM update, click **Next** to proceed.



6. A confirmation message then appears and shows the length of time it will take to copy the necessary files (including radio image) to the device. Click **Next** to begin the update.



A progress bar will run through the screen during the update process.



Note: In the middle of the update process, the progress bar may stop running. This is normal as the RUU is adjusting itself to complete the update process automatically.

7. When you see the screen below, it means update is complete. Click **Finish** to exit the utility.

